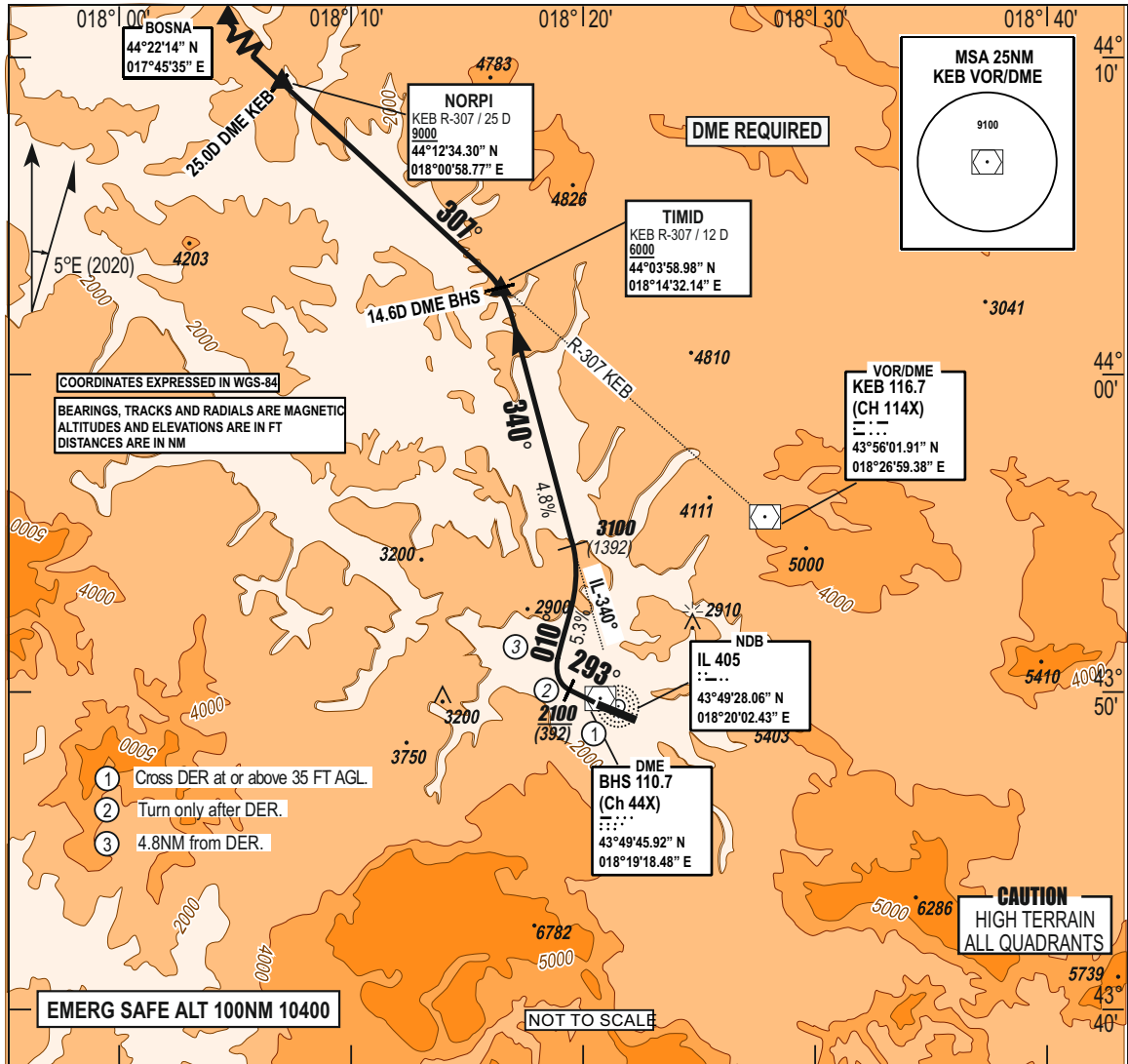


STANDARD DEPARTURE AD ELEV 1705 FT **TRANSITION** APP 136.450; 119.775 **SARAJEVO (LQSA)**
CHART INSTRUMENT HEIGHTS RELATED TO ALTITUDE TWR 118.250
 THR RWY 11 ELEV 1643 FT 10 000 FT GND 121.900 **BOSNA 4W RWY 29**
(SID) - ICAO VAR 5°E (2020) ATIS 124.125



SID	DEPARTURE ROUTE DESCRIPTION
BOSNA 4W RWY 29	Climb on RWY heading. After DER, when passing 2100 FT turn right on track 010° to intercept IL-340° to TIMID. Cross TIMID at or above 6000 FT and turn left R-307 KEB direct NORPI.

CHG: AD ELEV.:

RWY	KNOTS	60	120	180	240	300	360
29*	W-FPM	320	640	960	1280	1600	1920
29**	W-FPM	290	580	870	1160	1450	1740

* CLIMB RATE 5.3% MINIMUM CLIMB RATE TO 3100 FT
 ** CLIMB RATE 4.8% MINIMUM CLIMB RATE TO 6000 FT

THIS PAGE INTENTIONALLY LEFT BLANK